



PRAGUE STEPS.COM

PRAGUE & CZECH REPUBLIC
PRIVATE CUSTOMIZED TOURS

SPECIALIZED TOURS

- art tours / art gallery tours
- food - tasting tours
- off the beaten path tours
- historical / Baroque gardens
- religious / Christian / Jewish
- hiking tours
- seasonal tours / Christmas / Easter
- Czech countryside tours
- private tours of selected chateaus
- 20th century history tours
- WW2 & Communism tours

SERVICES

- Airport transfers
- Prague tours/ walking / driving
- Specialized tours
- One / two day trips in Czech Rep.
- Private access to selected interiors
- Seniors friendly tours
- Cultural events bookings
- no expire date voucher
- consulting the itinerary via Skype

ALŽBĚTA PETŘINOVÁ

art historian & tour guide

betty@praguesteps.com

+420 608 301 279

www.praguesteps.com

Prague / Czech Republic

facebook.com/PragueSteps

Instagram / praguesteps_com



SEASON 2020 / 2021



GENERAL OVERVIEW TOUR OF PRAGUE

A general overview tour of Prague covers all four historical quarters established in medieval times including the Castle. Meeting point is in the lobby of your hotel.

- Old Town
- New Town
- Lesser Town
- Hradshine

Itinerary for each quarter is described on following pages and can be customized according to the interest, needs and stamina of each client.



DURATION

A general overview tour can be split into two or more days. According to my experience, clients like to split the overview tour into two days by four to five hours each day.

- 2 days by 4 -5 hours a day
- minimum 3 hours a day
- 1 full day including lunch break
- or as you wish



COMBINATION

A general overview tour can be a combination of walking and driving with a private driver.

Different tours can be combined too.

- walking + driving tour
- overview+specialized
- (overview+Jewish Museum / overview + art tour ect.)
- Prague + countryside



PRAGUE - OLD TOWN RIGHT RIVER BANK

One of the four historical districts. Established in 1230 as Prague Royal Town. Nowhere else in Prague you will find so many short and winding streets. It still keeps its medieval layout. There are many shortcuts going through the old houses and their courtyards connecting different parts of the town. The center of the Old Town is the Old Town Square. The dominant feature of the square is the City Hall Tower accessible by a lift and the Astronomical Clock striking every hour during a day.



ITINERARY

- Old Town Square
- Týn Church
- Astronomical Clock
- Powder Gate
- Art-Nouveau Municipal House
- Ungelt courtyard
- St. Agnes Convent
- St. Giles Church
- St. James Church
- Charles University, est. 1348
- Estate Theatre
- Havel's Market, est. 1232
- Kubist House
- winding streets of the town



ADDITIONAL OPTIONS WITH ADMISSION

- Old Town City Hall Tower (lift)
- Powder Gate Tower
- Old Town Charles Bridge Tower
- National Gallery - Medieval Art
- Private DSC Art Gallery
- Cubist Museum
- café with a view of Astronomical Clock
- Estate Theatre / exclusive
- church interiors / free of charge



PRAGUE - NEW TOWN RIGHT RIVER BANK

One of the four historical districts established in 1348 as Prague Royal Town by a King of Bohemia and Holy Roman Emperor Charles IV. The name can be misleading as it was new in the 14th century. King Charles made from Prague the European political and cultural center. The grow of population led him to the idea to establish a new modern town. The center of the district is the Wenceslaus Square that witnessed many historical events and political turmoils.



ITINERARY

- Wencelaus Square
- New Town City Hall
- Church of Our Lady of the Snows
- National Theatre
- Dancing House
- St. Longine Rotunda
- Franciscan Garden
- Charles Square
- Emmaus Benedictine Monastery
- St. Ignatius Church
- WWII Memorial / crypt



ADDITIONAL OPTIONS WITH ADMISSION

- New Town City Hall Tower
- National Museum
- Dancing House Terrace
- Emmaus Benedictine Monastery
- Sklenar Private Art Gallery / free
- National Theatre / exclusive
- Antonín Dvořák / composer's museum called America
- Botanical Garden



PRAGUE - LESSER TOWN LEFT RIVER BANK

One of the four historical districts established in 1250 as Prague Royal Town. It is considered the most picturesque part of the town and it is also the least effected by the modern architecture. It was growing slowly in the valley between the Petřín Hill and the Castle. This area is rich with the historical gardens originally owned by significant aristocratic families. The famous Charles Bridge connects the Lesser Town with the Old Town. The dominant feature of the district is the St. Nicholas Church.



ITINERARY

- St. Nicholad Church
- Maltese Square
- Kampa Park
- Infant Jesus Church
- Wallenstein Garden
- St. John Hill
- Nerudova Street
- St. Thomas Church
- John Lennon Wall
- Vaclav Havel Memorial
- Victims of Communism Memorial



ADDITIONAL OPTIONS WITH ADMISSION

- St. Nicholas Church
- St. Nicholas Church Tower
- Alchymist Museum
- Kampa Modern Art Museum
- Franz Kafka Museum
- Portheimka Glass Museum
- Czech Museum of Music
- Vrtba Garden
- Palace Gardens
- Fürstenberg Garden



PRAGUE - HRADSCINE LEFT RIVER BANK

One of the four historical districts originally established as a tiny town in the vicinity of the Prague Castle in 1321. Under the reign of King Charles IV Hradschine attracted the aristocracy and the clergy. In 1541 it was damaged by a great fire and rebuilt in Renaissance style with typical sgraffito decoration. Nowadays, you can enjoy magnificent palaces and churches in both styles Renaissance and Baroque. The highest spot occupies magnificent Strahov Monastery with one of the most beautiful libraries in Europe.



ITINERARY

- Strahov Monastery
- Prague Loreto
- New World Street
- Hradschine Square
- Cernin Palace
- Cernin Garden
- Archbishop Palace
- Schwarzenberg Palace
- Salm Palace
- Tuscany Palace
- Martinic Palace
- St. John Nepomuceni Church
- local cafés



ADDITIONAL OPTIONS WITH ADSMISSION

- Strahov Library / behind the rope
- Strahov Library / exclusively
- Strahov historical rooms
- Loreto Treasury
- TriaNGle / 3 palaces of N. Gallery



PRAGUE CASTLE RIGHT RIVER BANK

Prague castle is the largest ancient castle complex in the world. The official seat of the former dukes, kings, emperor and nowadays of the President. Center of both secular and church power. It consists of St. Vitus Cathedral, Old Royal Palace, St. George Basilica, Golden Lane and Rosenberg and Lobkowitz Palace. It is possible to access the Castle from different directions, take the steps, take a ride by a tram or walk through Royal Garden known for the most beautiful Renaissance building outside Italy - Summer House of Queen Anne.



EXTERIOR ITINERARY

- 4 courtyards
- St. Vitus Cathedral
- Plečnik Gardens
- Old Royal Palace
- St. George Basilica
- Golden Lane
- Lobkowitz Palace



INTERIOR OPTIONS WITH ADMISSION

- Interiors of Cathedral, Basilica, Royal Palace and Golden Lane
- St. Vitus Cathedral Bell Tower (266 steps)
- History of the Prague Castle in the medieval underground
- Lobkowitz Palace Private Art Museum
- Treasury of St. Vitus Cathedral



FORMER JEWISH QUARTER

Several synagogues in the center of Prague survived all the centuries including WWII. The end of the Jewish ghetto started at end of the 18th century when the Emperor Josef II granted Jews the rights to move outside the walls of their settlement. Officially this part of the town is called Josefov after the emperor. The original houses did not survive the extensive redevelopment at the end of the 19th century that led to establishing of the Jewish Museum. One of the synagogues is the oldest and still active synagogue in Europe.



ITINERARY

- Old New Synagogue
- Memorial to Victims of Holocaust
- Old Jewish Cemetery
- Klausen Synagogue
- Spanish Synagogue
- High Synagogue
- Maisel Synagogue
- Burial Society Ceemonial Hall
- Franz Kafka Memorial
- Jubilee Synagogue / in New Town



INTERIOR OPTIONS WITH ADMISSION

- Jewish Museum / expositions inside all the synagogues
- entry fee 500 CZK valid 7 days
- closed on Saturdays and Jewish holidays



SPECIALIZED TOUR

VÁCLAV HAVEL & LIFE BEHIND THE IRON CURTAIN

Václav Havel was a significant personality of the 20th century. Playwright, philosopher, dissident and President of the country. During Communism he was a leading figure of dissent community and a critic of totalitarian regime. He was several times imprisoned for his opinions and activities. During Velvet Revolution in 1989 he became a founder of democratic Civic Forum party and was elected Czechoslovak President. The tour is focused on history of our country when there was no freedom of speech or private business.

ITINERARY

- sites associated with Havel such as a theater where he worked as a playwright
- Wenceslaus Square, the important place of Velvet Revolution
- Národní Třída, boulevard where the students marching was suppressed by a police which triggered the revolution
- Memorial to Václav Havel
- police station where people were interrogated and forced to collaborate with secret police
- and others

LITERATURE RECOMMENDED

- Michael Žantovský / Václav Havel A Life
- Václav Havel / The Power of Powerless
- Václav Havel / Letters to Olga
- Václav Havel / To the Castle and Back
- Václav Havel / Audience / (play)
- Václav Havel / Garden Party (play)
- Petr Sís / Growing Up Behind the iron Curtain (for children)
- Milan Kundera / The Unbearable Lightness of Being
- Bohumil Hrabal / Too Loud a Solitude



SPECIALIZED TOUR GARDEN TOUR

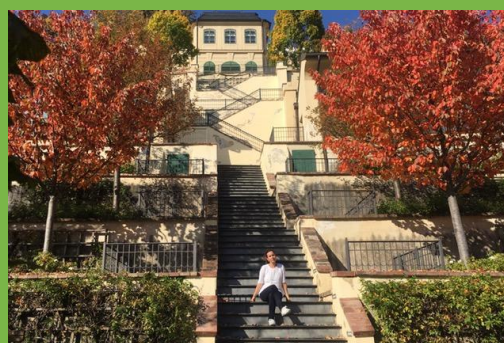
Prague is rich with historical Baroque gardens offering nice views of the town. Most of them are located on the left river bank around Lesser Town district. Originally owned by aristocratic families and designed by renowned architects of that time influenced by an Italian style. Gardens are open from April or May till the end of October. Gardens are peaceful oasis in the center of the town.

GARDENS IN CENTRE

- Wallenstein Garden
- Vrtba Garden
- Vojan's Orchards
- Fürstenberg Garden
- Lobkowitz Garden
- Pálffy Garden
- Ledeburg Garden
- Petřín Orchards
- Cernin Garden
- Royal Garden and others

GARDENS ACCESSIBLE BY CAR OR PUBLIC TRANSPORT

- Troja Chateau Garden
- Botanic Garden in Troja
- Botanic Garden in New Town
- Pruhonice Park (UNESCO)





SPECIALIZED TOUR ART TOUR

Prague was always a town that hosted artists from all around the Europe. Unofficial art scene during Communism is unique as well as the strong Baroque culture in visual art and music. Depends on interest of each client. There are rich collections including masters such as Cranach, Dürer, Rembrandt, Rubens, Goya or Czech Kupka and Alfons Mucha.



ART IN PUBLIC SPACE

- min 3 hours / optimum 4-5 hrs
- includes the best off in at least one art gallery
- explanation of different architecture styles right in a terrain
- all the details depends on focus of each client - communication prior arrival is recommended



GALLERIES THE BEST OFF SELECTION

- National Gallery / several places
- Kampa Museum / 20th century
- DOX / contemporary art
- Portheimka / Bohemian Glass
- Cubist Museum
- Alfons Mucha Museum
- Lasvit Glass Showroom /exclusive
- private galleries / exclusive





PRAGUE TOUR WITH FOOD TASTING

Traveling is about getting to know different culture and history of other countries and regions. Very nice way how you can do so is through the local cuisine. The tour is combination of walking through the historical town and tasting local specialities. The tour includes snack, lunch, dessert, local beer or wine and other drink with a view. At the end of the tour you will get a collection of the typical Czech recipes and recommendation where to eat in Prague during the rest of your stay.



LUNCH TIME

- there is no budget for food in this tour, you pay what you eat so it gives you freedom to experiment and taste whatever you like
- I give you all the recommendation and the story behind each food and you can taste what tempts you most
- you tell me in advance whether you prefer rather street food, everyday restaurant or fine dining
- let me know your allergies and diet in advance too



DRINK WITH A VIEW

I know about several very nice spots with a great view and no other people nearby.

I will keep these places secret, so I will not reveal them until you come to Prague.



SPECIALIZED TOUR OFF THE BEATEN PATH

I recommend this tour to those visitors they would like to add something more into their itinerary besides the notoriously known must see sites. It is also suitable for those they already have been to Prague, this is their second visit and they would like to discover something new. To get the most out of it I recommend to use public transportation or a private driver.



RECOMMENDED DISTRICTS

These districts are booming and quickly developing into cool and very popular areas for both living and cultural and social life.

- Vinohrady / Royal Winyards known as bourgeois district
- Žižkov / former working-class district, called Free Republic of Zizkov
- Karlín / former industrial district
- Holešovice / art district
- Troja / area known for Prague ZOO, chateau and winyards
- Vyšehrad / former fortress,



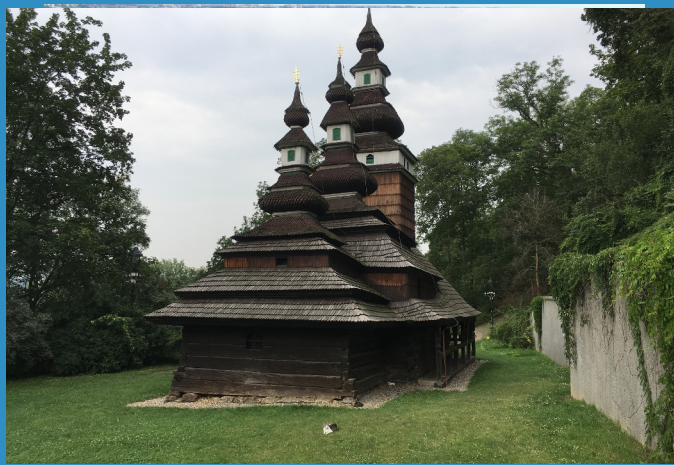
SITES

- local food market and cafés
- independent art galleries and boutiques
- Žižkov TV Tower with statues of popular crawling babies
- the biggest equestrian statue in Europe
- villa district from the beginning of the 20th c.
- Troja Chateau
- unique Prague ZOO
- DOX / art complex
- park with view of Prague bridges
- Stromovka / originally Royal



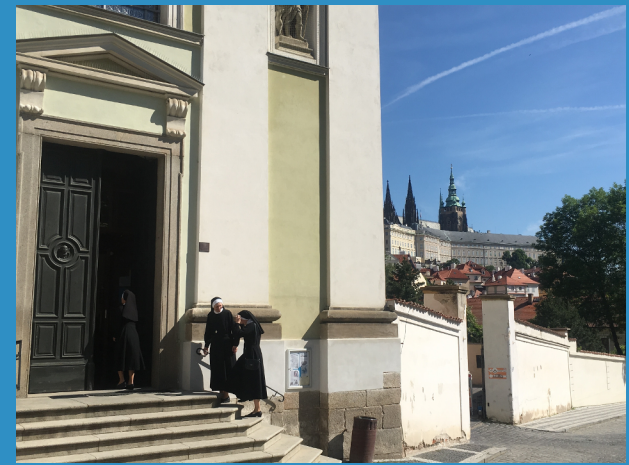
SPECIALIZED TOUR RELIGIOUS

The early Christian churches were very often build on former pagans sites. For two hundreds year the Protestantism was predominating until 1620 when Habsburgs proclaimed Roman Catholicism as the only one official religion. Jews were more or less tolerated. Catholic influence is strongly reflected in the local Baroque architecture and art. The whole Prague is rich with 800 churches and smaller chapels. Many facades of the burghers houses are decorated with symbols featuring religious motifs.



PRAGUE RELIGIOUS SITES

- St. Vitus Cathedral at the Castle
- Charles Bridge with the statues of the saints
- Strahov Monastery
- St. James Church
- Black plague columns
- Prague Loreto pilgrimage site with the treasury of liturgical objects
- St. Agnes Convent, Gothic complex with the medieval Bohemian art collection
- popular Infant Jesus statue called Bambini di Praga



CZECH RELIGIOUS SITES HALF DAY TRIP

- by car with private driver and guide
- Příbram / Baroque Marian pilgrimage site
- Holy Cross Chapel in Karlstejn castle from the 14th century
- or others o request



SPECIALIZED TOUR PRAGUE BY NIGHT

Prague by night has its magical atmosphere. All the bustle slows down and the historical buildings are lit up with warm yellow light. Great time to listen to some old legends and stories. Prague by night has a unique fairy tale spirit that inspired many artists from all around the world, writers, musicians or film makers. Prague is one of the safest towns in Europe so you do not have to be afraid of walking by the night.



START OF THE TOUR

- The tour starts right before the sunset which is every day in different time. During summer we have quite long days. So the tour can start as late as at 9 pm.
- The tour covers all the main sites with unique ambiance such as Prague Castle, Charles Bridge, streets of the Lesser Town and the Old Town.



DURATION

- optimum is 3 hrs
- start and finish in your hotel if not required in another way



SPECIALIZED TOUR HIKING

Czech Republic has the best network and mark system of hiking trails in Europe. The painted signs are on the posts, rocks and trees along the way. The system is more than 130 years old and it is unique for its unified methodology and the length. There are currently 43.000 km / 26.718 miles of marked trails. The mark is a bright white square with a horizontal color band in the middle. The trails are regularly maintained by volunteers from the Czech Tourist Club. It includes trails for cross-country skiing, for people on wheelchair or educational trails.



HIKING TOUR KARLŠTEJN - ST. JOHN UN. CLIFF

The oldest surviving trail in the Czech republic is the one including a leg connecting a famous medieval Karlštejn Castle with the pilgrimage village St. John under the Cliff. The castle was founded by the Emperor Charles IV as a treasury for imperial and Czech crown jewels. The history of the village dates back to the 9th century when the hermit Ivan settled down in the cave under the cliff. God sent him a doe to feed him with milk and demons tempted him to leave but St. John the Baptist appeared on the hillock and gave him a wooden cross.



ITINERARY

- by car to Karlštejn Castle
- tour of the castle
- trip from Karlštejn Castle to St. John under the Cliff
- climb for the lookout
- picnic at the hilltop
- medium difficulty



HALF DAY TRIP TEREZÍN

The foundation of the town Terezín dates back to the late 18th century. Emperor Josef II experienced from several wars decided to build a fortress consisting of the Main and the Small Fortress. It is an unique military complex of massive bastions, flood moats and a network of underground passages. Over the years Terezín turned into a garrison town and military prison. The position and the fact that it was easy to control the area it became a place of suffering of the thousands of innocent people during the WWII.



SMALL & MAIN FORTRESS

- the former Small Fortress became a police prison of the Prague Gestapo. Mostly political prisoners were detained there
- the town itself, the former Main Fortress turned into a ghetto, collection and transit camp for Jews from many European countries



ITINERARY

- Small Fortress
- Graveyard
- Main Fortress
- Magdeburg Barracks (seat of the Council of Elders and offices of the Jewish self - administration)
- Ghetto Museum - former school
- Synagogue decorated and used by prisoners
- crematorium
- columbarium
- central ghetto mortuary



FULL DAY TRIP ČESKÝ KRUMLOV

Ceský Krumlov belongs to one of the most charming towns in the Czech republic. It is divided by a Vltava river to the castle area and a town with preserved medieval layout. Its streets copy the shape of the river crook. The Castle was always a residence of the most significant and wealthiest aristocratic families in the country. It is the largest castle complex in Czech after the Prague Castle. For a short time it was owned by the emperor. The historical town was designated UNESCO World Heritage Site.



ČESKÝ KRUMLOV ITINERARY

- by car (2 hrs away from Prague)
- castle gardens with the unique revolving theater auditorium
- tour of the castle interiors
- St. Vitus Church
- exploring the winding streets of Český Krumlov
- Egon Schiele Art Gallery
- Josef Seidel photo studio dating back to the end of the 19th c.
- synagogue



OPTIONAL STOP ON THE WAY

- Hluboká Chateau inspired by British Windsor
- České Budějovice with Gothic, Renaissance, Baroque and 19th century houses
- excursion to Budweiser brewery





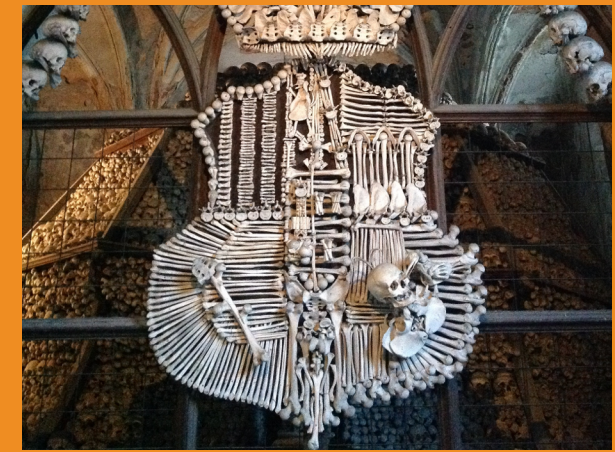
HALF DAY TRIP KUTNÁ HORA

Kutná Hora dates back to 1142 when the Cistercians settled down in nearby Sedlec and founded a monastery there. Very soon the miners started to mine a silver and the silver fever effected the development of the town in the 13th century. There were the deepest mines in the world. Kutná Hora became the second most important town after Prague. The Royal Mint House was established where they stroke Prague Groschen very strong currency of that time. King had his own residence and chapel right on the spot of processing the silver.



ITINERARY

- All Saints Chapel with ossuary
- the oldest cathedral in a country
Cathedral of Assumption of Our Lady and St. John the Baptist in Sedlec (suburb of Kutná Hora)
- St. Barbara church
- Jesuit College
- bridge decorated with the statues of saints
- Stone House
- medieval Stone Fountain



OPTIONAL

- tour of the Italian Court interior
- Museum of silver including a tour into the former mines (90 mins)
- GASK art gallery in former Jesuit College
- former Cistercian Monastery
- **ON THE WAY BACK**
- Kačina Chateau



